

“Yoshio Sekine – From Body to Signs”



“#422” 1975, acrylic on canvas, 116.7×80.3cm

Exhibition Title: Yoshio Sekine — From Body to Signs

Dates: 26 January (Sat) - 23 February (Sat)

Venue: Tokyo Gallery+BTAP | Tokyo
7th Fl, 8-10-5 Ginza, Chuo-ku, Tokyo 104-0061
TEL: 03-3571-1808 / FAX: 03-3571-7689

Gallery hours: 11:00-19:00 (Sat: -17:00)
Closed Sundays, Mondays, Holidays

Talk event: “The Disappearance of the Body”
Guest: Yusaku Imamura (The director of Tokyo Wonder Site)
26 January (Sat) | 15:00-

Opening 26 January (Sat) | 16:00-18:00
At Tokyo Gallery+BTAP

Inquiries: Hiroyuki Sasaki (hiroyuki.sasaki@tokyo-gallery.com)

Tokyo Gallery + BTAP is pleased to announce an exhibition by Yoshio Sekine entitled “From Body to Signs” starting Saturday, January 26, 2013. Sekine was a founding member of the Gutai Art Association. This exhibition will showcase a selection of early abstract works and paintings depicting the Japanese abacus.

Postwar Japanese avant-garde art is currently enjoying a spate of renewed interest in the US and Europe, and the Gutai collective in particular is now being positioned as a leading contemporary Japanese art movement, with a large-scale retrospective entitled “Splendid Playground” to be held at the Guggenheim Museum in New York starting in February.



“Color of Gas” 1959, acrylic on canvas, 45.5×37.9cm

With the advent of World War II, the world grew to become rapidly centralized, while intellectual activity and labor became overshadowed by the flow of international currencies throughout the world’s markets. In contrast, many artists began to look towards their own bodies as sites of artistic expression, leading to the emergence of various contemporaneous artistic practices around the world that attempted to transcribe this bodily character. Gutai can be seen as one of these symbolic movements. Soon, however, the power of the mass media began to transform everything, including human bodies, into codes and symbols. Gutai art can be read in terms of a trajectory of attempts to grapple with the human body based on trial and error, centering on the physical presences of human beings living in this consumer society.

By choosing to depict not monetary currency, but the abacus as a tool, Sekine offers us an imprint of Japanese consciousness and behavior that dates from the country’s period of rapid economic growth and development. This exhibition of Sekine’s works promises to be a timely opportunity to acknowledge and reconsider the way in which the human body has been stymied and marginalized by information, international currency flows, and advertising.

A talk entitled “The Disappearance of the Body”, with Yusaku Imamura (director of Tokyo Wonder Site) will also be held at 15:00 on Saturday, January 26. We look forward to welcoming you at the gallery.

Yoshio SEKINE (1922-1989 born in Wakayama prefecture)

- 1948 Studied under Jiro Yoshihara
1954 The Gutai group was founded by Jiro Yoshihara

[Major solo exhibitions]

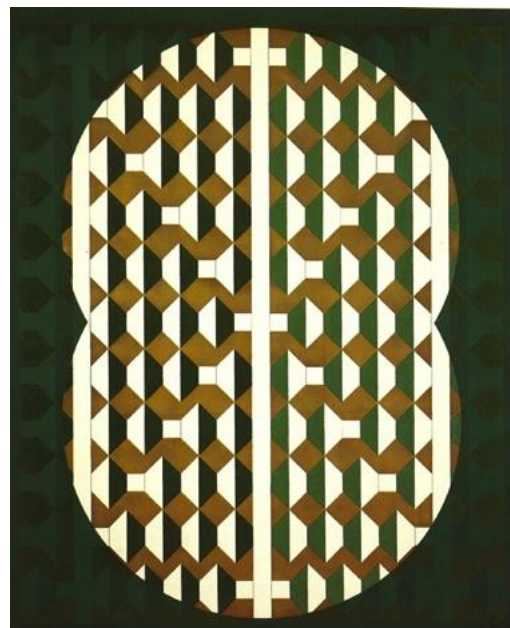
- 1956 Shimbido Gallery (Kobe, Japan)
1963 Naika Gallery (Tokyo, Japan)
1965 Tokyo Gallery (Tokyo, Japan)
1966 Staempfli Gallery (New York, USA)
1978 Imabashi Gallery (Japan)
1990 "In Memorial of Yoshio Sekine" Tokyo Gallery (Tokyo, Japan)

[Major group exhibitions]

- 1949-51 Nika Group Exhibition (Kobe, Japan)
1953-55 Modern Art Exhibition (Osaka, Japan)
1955 Exhibition of Yomiuri Independent (Tokyo, Japan)
1958 "International Art of the New Era" (Osaka, Nagasaki, Hiroshima, Tokyo, Kyoto)
1964 "Contemporary Trend of Japanese Paintings and Sculptures"
(National Museum of Modern Art, Kyoto)
1966 "Modern Art of Japan" (Venice, Italy)
1972 "Today's focus : on modern Japanese art : the 20th anniversary exhibition"
(National Museum of Modern Art, Tokyo)
1981 "The 1960's : a decade of change in contemporary Japanese art"+
(National Museum of Modern Art, Tokyo and Kyoto)



"#588" 1985, acrylic on canvas, 162.1×130.3cm



"#43" 1965, acrylic on canvas, 162.1×130.3cm